

# Illinois Workers' Compensation Commission

---

## FY2007 ANNUAL REPORT

---

Rod R. Blagojevich  
Governor

Dennis R. Ruth  
Chairman

# Table of Contents

---

LETTER .....	1
HIGHLIGHTS .....	2
MISSION STATEMENT .....	2
BOARD MEMBERS .....	3
OVERVIEW OF WORKERS' COMPENSATION .....	4
OVERVIEW OF DISPUTE RESOLUTION PROCESS .....	5
FINANCES .....	6
INSURANCE .....	8
ADMINISTRATION .....	10
STATISTICS .....	13
INTERSTATE COMPARISONS .....	22

## Commission Offices

---

100 W. Randolph #8-200  
Chicago, IL 60601  
312/814-6611

202 N.E. Madison Ave. #201  
Peoria, IL 61602  
309/671-3019

701 S. Second St.  
Springfield, IL 62704  
217/785-7087

1014 Eastport Plaza Drive  
Collinsville, IL 62234  
618/346-3450

200 S. Wyman  
Rockford, IL 61101  
815/987-7292

Toll-free: 866/352-3033 (within Illinois only)  
TDD: 312/814-2959  
Web site: [www.iwcc.il.gov](http://www.iwcc.il.gov)  
E-Mail: [infoquestions.wcc@illinois.gov](mailto:infoquestions.wcc@illinois.gov)



ILLINOIS WORKERS' COMPENSATION COMMISSION

100 W. RANDOLPH ST. #8-200

CHICAGO, IL 60601-3227

312/814-6611

WWW.IWCC.IL.GOV

ROD R. BLAGOJEVICH  
GOVERNOR

DENNIS R. RUTH  
CHAIRMAN

Dear Governor Blagojevich,  
Members of the General Assembly,  
and Citizens of Illinois:

Thanks to the governor and legislature's authorization of a third panel of commissioners, we issued 50% more review decisions in FY07 than in the previous year.

And we collected more money from uninsured employers during FY07 than in the past seven years combined. That money pays workers' compensation benefits to injured workers whose uninsured employers failed to pay them.

We are committed to work together to serve the employers and employees of Illinois. We ask for your support and participation in this effort.

Dennis R. Ruth, Chairman

Mario Basurto, Commissioner

David L. Gore, Commissioner

Molly Mason, Commissioner

Yolaine Dauphin, Commissioner

Kevin Lamborn, Commissioner

Paul W. Rink, Commissioner

James F. DeMunno, Commissioner

Nancy Lindsay, Commissioner

Barbara A. Sherman, Commissioner

Amy Masters, Operations Manager  
and Secretary of the Commission

Carolyn L. Parks, Executive Director  
and Judicial Manager

## Highlights

- Thanks to new legislation allowing the governor to appoint three additional commissioners, the number of review decisions increased by 50%.
- The Insurance Compliance Division collected \$1.2 million in penalties from 52 uninsured employers, and brought nearly 500 employees under the protection of the law. The monies will pay benefits due to injured workers whose uninsured employers failed to pay them.
- The perception of Illinois workers' compensation costs is often different than the reality. Illinois is a high-wage state with a low injury rate. On most cost measures, Illinois falls in the middle of the pack.
- Accident rates have fallen dramatically. Illinois' 2004 workers' compensation total injury rate was 55% lower than in 1991. Everyone wins when injuries are avoided.
- After adjusting for inflation, the 2008 advisory rate for workers' compensation insurance in Illinois represents a 33% decrease since 1990.

## Mission Statement

The Illinois Workers' Compensation Commission resolves disputes that occur between injured workers and their employers regarding workers' compensation. The Commission strives to assure financial protection to injured workers and their dependents at a reasonable cost to employers.

The Commission performs four main functions:

- 1) *Resolve disputes.* The Commission strives to provide a fair, timely process by which disputed claims may be resolved.
- 2) *Ensure compliance with the law.* The Commission protects the rights of employees and employers under the Illinois Workers' Compensation and Occupational Diseases Acts.
- 3) *Administer self-insurance.* The Commission evaluates and approves eligible employers that wish to insure themselves for their workers' compensation liabilities.
- 4) *Collect statistics.* The Commission compiles information on work-related injuries and diseases.

The Commission intends to accomplish these goals while looking constantly for ways to improve the quality of service and treating the public and co-workers with respect. The success of this organization depends on the commitment and full participation of every member.

# Board Members

We are grateful to the individuals who serve on our boards. All serve without compensation.

---

## COMMISSION REVIEW BOARD

---

The board investigates complaints made against arbitrators and commissioners. The governor appoints two public members, the senior labor and business commissioners serve by statute, and the arbitrators elect one Chicago and one Downstate arbitrator.

Robert Hanaford Attorney, Robert H. Hanaford	Mario Basurto Senior Business Commissioner	Edward Lee Chicago Arbitrator
Ann Marie Walsh Attorney, Lord, Bissell & Brook	Barbara A. Sherman Senior Labor Commissioner	Ruth White Downstate Arbitrator

---

## SELF-INSURERS ADVISORY BOARD

---

The board reviews applications from private companies for the self-insurance privilege and makes recommendations to the chairman. The board also ensures the continued payment of benefits to workers of bankrupt self-insurers.

Alex G. Alexandrou City of Aurora	Margaret Blackshere (Public member) Illinois State AFL-CIO (retired)	Paul M. McCloskey Amalgamated Bank of Chicago
Curtis C. Beam Archer Daniels Midland Co.	Gerald F. Cooper Scopelitis, Garvin, Light & Hanson	David Taylor Int'l. Truck & Engine Corp.

---

## WORKERS' COMPENSATION ADVISORY BOARD

---

The board assists the Commission in formulating policies, setting priorities, and developing administrative goals. The board also makes recommendations to the governor regarding Commission appointments.

<u>EMPLOYEES</u>		<u>EMPLOYERS</u>	
Michael Carrigan Illinois AFL-CIO	Dave Menchetti Cullen, Haskins, Nicholson and Menchetti	David Buckman CORE Construction Group	Gerald Roper Chgo. Chamber of Comm.
Frank Cavarretta United Steel Workers	Kim Presbrey Presbrey & Assoc.	Mark Flannery Caterpillar, Inc.	David Vite IL Retail Merchants Assoc.
Philip Gruber Int'l. Assoc. of Machinists and Aerospace Workers		Kim Maisch Natl. Fed. of Ind. Business	

---

## WORKERS' COMPENSATION MEDICAL FEE ADVISORY BOARD

---

The board advises the IWCC on the establishment of medical fees and the accessibility of treatment.

<u>EMPLOYEES</u>	<u>EMPLOYERS</u>	<u>MEDICAL PROVIDERS</u>
Eric Dean Int'l. Assoc. of Ironworkers	Maddy Bowling Maddy Bowling & Associates	Elena Butkus Illinois Hospital Assoc.
Roger Poole Int'l. Assoc. of Machinists and Aerospace Workers	Kim Moreland Rising Medical Solutions	Jesse Butler, MD Illinois Bone and Joint Institute
Ronald Powell United Food & Commercial Workers	John Smolk United Airlines	Edward Sclamberg, MD Illinois Bone and Joint Institute

# Overview of Workers' Compensation

Workers' compensation laws were the first acts of social legislation passed in the United States, and they have always been controversial. At the beginning of the 20th century, employers feared the assumption of liability for work-related injuries would destroy their businesses, while workers feared financial ruin from disabling injuries.

Before the laws took effect, an injured worker seeking compensation had to file a lawsuit against his or her employer in court. At the time, the common law held that the employer had a duty to provide a safe place to work and safe tools; to give warnings of dangers; and to provide a sufficient number of appropriate fellow servants to perform the tasks.

In court, the employee had to prove negligence. The employer could present a defense that blamed the injured worker's contributory negligence, or attributed the injury to the negligence of a fellow servant, or argued that the employee assumed certain risks in accepting the job. The process was prolonged and uncertain, with large risks to both employee and employer.

The high injury and death rates throughout the Industrial Revolution and growing dissatisfaction with the common law gradually led to the enactment of employer liability acts. Employers were held more responsible for negligence, but employees still had to file lawsuits for damages.

The first workers' compensation laws originated in Germany in 1884 with a compulsory system of accident insurance covering all employees in manufacturing, mining, and transportation. Similar laws passed in other European countries.

In the U.S., laws were passed on a state-by-state basis. Most of the early laws covered only hazardous occupations and were frequently challenged as unconstitutional. Maryland passed the first act in 1902, which was restricted to fatal cases. The first law of general application that withstood legal challenges was Wisconsin's act of 1911. Illinois passed its law in 1911, effective May 1, 1912. It took until 1948 for all states to establish a workers' compensation law.

Workers' compensation laws contain two tradeoffs:

1. Employees gave up their right to sue and potentially win large awards in court in exchange for more modest but prompt compensation;
2. Employers gave up their common law defenses in exchange for limits on their liabilities.

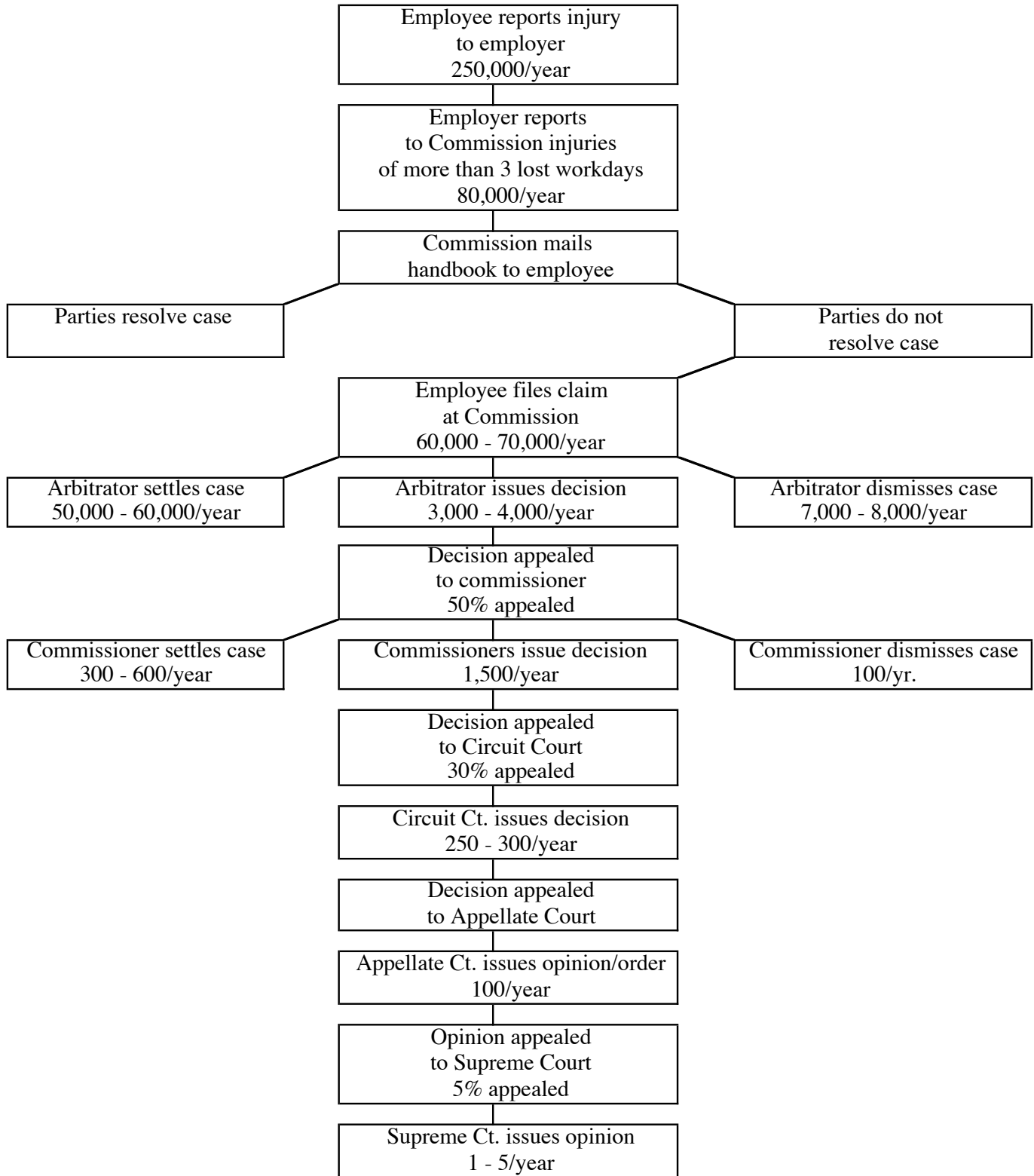
Workers' compensation was established as a no-fault system. The theory behind the law is that the cost of work-related injuries or illnesses should be part of the cost of the product or service.

Originally, the courts administered the Illinois act. The volume overwhelmed the courts, however, and on July 1, 1913, a three-member Industrial Board was created. In 1917, a five-member Industrial Commission was created within the Illinois Department of Labor. In 1957, the Commission separated from the Department of Labor and became a self-standing agency. On January 1, 2005, the agency officially became the Illinois Workers' Compensation Commission.

Almost every employee who is hired, injured, or whose employment is localized in Illinois is covered by workers' compensation. For the most part, benefits are paid for accidental injuries that are caused, in whole or in part, by the employee's work. This includes the aggravation of a pre-existing condition and injuries brought on by the repetitive use of a part of the body.

Illinois employers pay for workers' compensation benefits through insurance policies or by self-insurance. Benefits are based on the worker's earnings, subject to certain limits. Cases are first heard by arbitrators, whose decisions may be appealed to commissioners. Cases may proceed on to the circuit court, Illinois Appellate Court, and the Illinois Supreme Court. Most cases, however, are settled between the parties.

# Overview of Dispute Resolution Process



# Finances

The Commission operates eight funds that are independent of the General Revenue Fund.

SPECIAL FUNDS					
	6/30/06 Balance	<i>plus</i> Income	<i>minus</i> Expenditures	<i>plus/minus</i> Adjustments	6/30/07 Balance
IWCC Operations Fund	\$6,517,922	\$40,230,469	\$16,346,762	(\$6,304,822)	\$24,096,807
Injured Workers' Benefit Fund	\$159,467	\$1,046,300	\$0	\$0	\$1,205,767
Rate Adjustment Fund	(\$15,008,240)	\$16,378,522	\$11,305,532	\$6,130	(\$9,929,120)
Second Injury Fund	\$532,743	\$1,263,455	\$1,177,667	\$0	\$618,531
Self-Insurers Administration Fund	\$407,233	\$404,565	\$394,062	\$34,177	\$451,913
Self-Insurers Security Fund	\$18,243,254	\$4,361,511	\$5,468,594	\$565,203	\$17,701,374
Transcript Deposit Fund	\$34,136	\$13,860	\$10,146	\$0	\$37,850
Workers' Compensation Benefit Trust Fund	\$1,381	\$90	\$0	\$0	\$1,471

## IWCC OPERATIONS FUND

*Illinois Compiled Statutes, Ch. 820, Para. 305, Sec. 4d; Ch. 215, Para. 5, Sec. 416*

The IWCC Operations Fund was created in 2003 to pay for the administrative costs of the agency, making Illinois the 46<sup>th</sup> state in the country to pay for its workers' compensation agency through an independent source of funds. Each year, employers pay a 1.01% surcharge on workers' compensation insurance premiums, while self-insured employers pay an assessment of 0.0075% of payroll.

## INJURED WORKERS' BENEFIT FUND

*Illinois Compiled Statutes, Chapter 820, Section 4(d)*

The Injured Workers' Benefit Fund was created as part of the 2005 legislative reform package. The IWBF collects fines from uninsured employers and pays benefits to the injured employees of uninsured employers whose employers fail to pay.

Payments totaling \$305,000 were made to seven injured workers whose cases were resolved during FY07. Without this fund, these workers would not have received the benefits they were due.

## RATE ADJUSTMENT FUND

*Illinois Compiled Statutes, Chapter 820, Paragraph 305, Sections 7-8*

The Rate Adjustment Fund was created in 1975 to pay cost-of-living increases to individuals who are either permanently and totally disabled or the survivors of fatally-injured workers. Individuals who receive awards for permanent and total disability or death benefits are eligible.

Benefits are paid each month, beginning on July 15 of the second year after the award or settlement is entered by the Commission. Recipients are given an amount equal to the percentage increase in the



statewide average weekly wage, as calculated by the Department of Employment Security. If there is a decrease in the statewide average weekly wage, there is no change in the compensation rate.

Every six months, self-insured employers and insurance companies pay an assessment of 1.25% of all indemnity benefits paid in the preceding six-month period. The RAF fund has run a deficit for years.

---

## SECOND INJURY FUND

*Illinois Compiled Statutes, Chapter 820, Paragraph 305, Sections 7-8*

The Second Injury Fund provides an incentive to employers to hire disabled workers. Illinois' SIF is more narrowly constructed than most other states. If a worker who had previously incurred the complete loss of a member or the use of a member (one hand, arm, foot, leg, or eye) is injured on the job and suffers the complete loss of another member so that he or she is permanently and totally disabled (PTD), the employer is liable only for the injury due to the second accident. The fund pays the amount necessary to provide the worker with a PTD indemnity benefit.

Approximately 100 individuals receive SIF benefits. In January and July each year, insurers and self-insured employers pay assessments up to 1/8 of 1% of compensation payments made during the previous six months.

---

## SELF-INSURERS ADMINISTRATION FUND

*Illinois Compiled Statutes, Chapter 820, Paragraph 305, Section 4a-6.1*

The Self-Insurers Administration Fund was created in 1988 to pay the administrative costs of the Commission's self-insurance program. Private self-insured employers pay a fee of \$500 per entity when applying for or renewing the self-insurance privilege.

---

## SELF-INSURERS SECURITY FUND

*Illinois Compiled Statutes, Chapter 820, Paragraph 305, Sections 4a-5, 7*

The Self-Insurers Security Fund was created in 1986 to pay benefits to employees of private self-insurers that became insolvent after 1986. Self-insured employers pay assessments based on their indemnity payments, up to a maximum of 1.2% of indemnity benefits paid during the preceding year. The "income received" column also reflects the collection of bonds and escrows from self-insured employers during the year. The "adjustments" column reflects changes in the unpaid liability of the fund. This fund has always paid the benefits in full.

---

## TRANSCRIPT DEPOSIT FUND

*Illinois Compiled Statutes, Chapter 30, Paragraph 105*

When a case is appealed to the circuit court, the appealing party pays a \$35 fee for the preparation of the file.

---

## W.C. BENEFIT TRUST FUND

*Illinois Compiled Statutes, Chapter 30, Paragraph 105*

The Workers' Compensation Benefit Trust Fund pays benefits to employees of private self-insurers that became insolvent before 1986. Benefits are paid from securities posted by the self-insurers; any unused funds are then returned to the insolvent estate.

# Insurance

Employers are responsible for the payment of benefits to injured workers; they must either purchase insurance or obtain permission to self-insure.

## INSURANCE

The workers' compensation insurance business in Illinois is profitable and highly competitive. More insurance companies sell workers' compensation policies in Illinois than in any other state.<sup>1</sup>

The National Council on Compensation Insurance, a private organization, issues advisory insurance rates. Illinois carriers are free to set their own rates, and use the advisory rate in their calculations.

Using the NCCI advisory rates, a premium of \$100 in 1990 would cost only \$108.49 in 2008. After adjusting for inflation, the 2008 advisory rate actually represents a *33% decrease* in costs.<sup>2</sup>

## INSURANCE COMPLIANCE PROGRAM

In FY07, the unit collected \$1.2 million from 52 employers found to be operating without insurance, and brought nearly 500 employees under the protection of the law.

Illinois law requires employers to insure themselves for their workers' compensation liabilities, but some employers fail to comply. These employers enjoy an unfair competitive advantage over law-abiding companies, while leaving their employees vulnerable if accidents should occur.

If the Commission finds an employer knowingly and willfully failed to obtain insurance, it may be fined up to \$500 for every day of noncompliance, with a minimum fine of \$10,000. Corporate officers may be held personally liable if the company fails to pay the fine.

Under legislation that took effect July 20, 2005, an employer may also face criminal charges and/or a work-stop order for failing to obtain workers' compensation insurance.

Pursuant to the 2005 reform legislation, fines are deposited into the newly created Injured Workers' Benefit Fund, which then pays benefits to injured workers whose uninsured employers fail to pay.

## BALANCE BILLING

By law, employers are responsible for the payment of all medical services reasonably necessary to cure or relieve the injured worker from the effects of the injury.

The legislation that took effect July 20, 2005 contains a balance billing provision. If an employee informs the medical provider that a claim is on file at the Commission, the provider must cease all efforts to collect payment from the employee. Any statute of limitations applicable to the provider's efforts to collect from the employee is tolled from the date that the employee files the application with the Commission until the date that the provider is permitted to resume collection.

When an employee notifies a medical provider that the treatment or service is for a work-related injury, the provider shall bill the employer directly. If the employer does not dispute payment of first aid, medical, surgical, or hospital services, Section 8(a) provides that the employer shall make payment directly to the provider on behalf of the employee. The employer shall pay the bill within 60 days of receipt of the bill as long as the claim contains substantially all the required data elements necessary to adjudicate the bills. Unpaid bills incur interest at a rate of 1% per month, payable to the provider. A provider cannot hold an employee liable for costs related to non-disputed services for a compensable injury and shall not bill or

attempt to recover from the employee the difference between the provider's charge and the amount paid by the employer or insurer on a compensable injury.

While the claim at the Commission is pending, the provider may mail the employee reminders that the employee will be responsible for payment of the bill when the provider is able to resume collection efforts. The provider may request information about the Commission claim and if the employee fails to respond or provide the information within 90 days, the provider is entitled to resume collection efforts and the employee is responsible for payment of the bills. The reminders shall not be provided to any credit agency.

#### SELF-INSURANCE

Private employers may obtain approval to insure themselves for their workers' compensation liabilities, or they may join a pool of other employers. The Commission evaluates individual self-insurers, while the Illinois Division of Insurance evaluates pools. Public employers may self-insure without obtaining approval.

Less than 1% of employers self-insure, but they are among the largest organizations in the state, and employ roughly 10% of the employees in Illinois.

As the cost of traditional insurance has decreased, many employers have stopped self-insuring and returned to conventional insurance arrangements.

PARENT COMPANIES  
PARTICIPATING IN THE  
COMMISSION'S SELF-INSURANCE PROGRAM

Date	# Parent Companies
6/30/95	496
6/30/00	361
6/30/05	319
6/30/06	311
6/30/07	297

# Administration

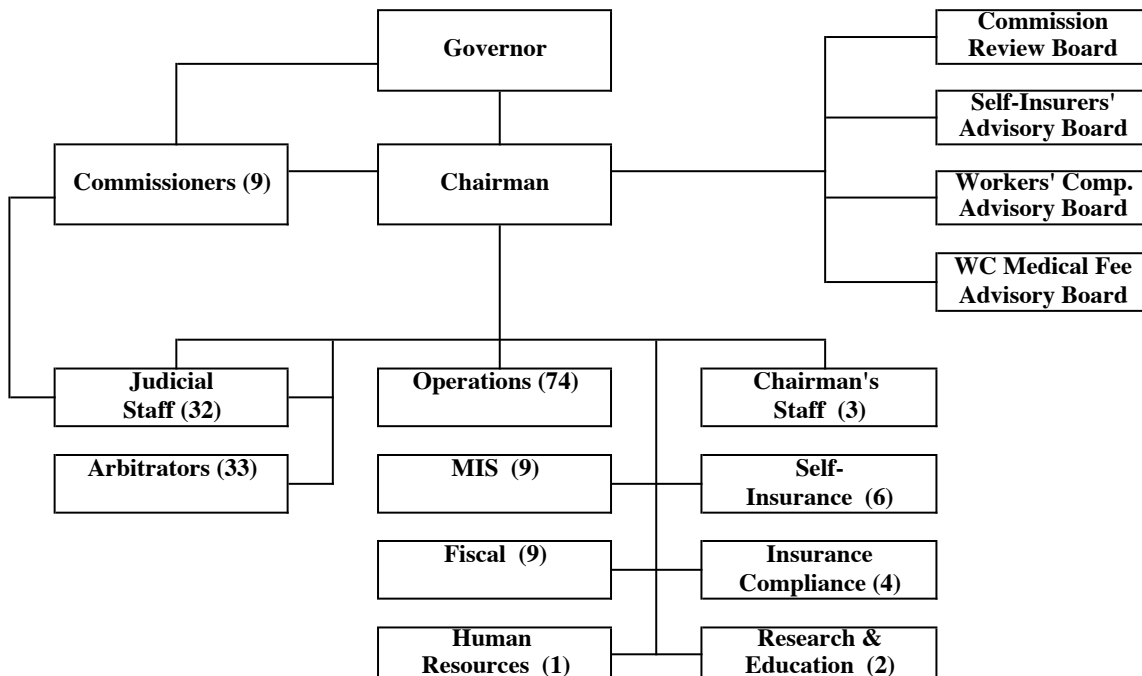
## ADMINISTRATIVE ACCOMPLISHMENTS

- The Insurance Compliance Division collected \$1.2 million in fines from 52 uninsured employers, and brought nearly 500 employees under the protection of the law.
- Since the chairman directed arbitrators to increase efforts to resolve the oldest cases, the number of red-line cases—those three years old or older—has dropped by 12%.
- The total number of cases pending at the Commission has declined from over 111,000 cases in FY03, when the Blagojevich administration took office, to roughly 97,000 cases at the end of FY07.
- The Commission installed a computerized file tracking system that has improved control over files. Each bar-coded case file is now scanned when it is checked in or out of the file room.
- Downstate arbitrators are now in better touch with the main Chicago office. Each arbitrator received a cell phone and laptop computer that is connected to the IWCC mainframe computer.
- The Commission now presorts each day's notices by law firm and address, and inserts them into one envelope, thereby reducing postage costs. In addition, we computerized the process by which we send out decisions through certified mail, which expedites processing and allows for better record-keeping.
- The Commission computerized the tracking system for court reporters. When a *Petition for Review* is filed and entered into our mainframe, the court reporter is automatically notified that a transcript has been ordered. This reduces possible delays at the review level.

## ORGANIZATIONAL STRUCTURE

At the end of FY07, the Workers' Compensation Commission consisted of the chairman, nine commissioners, 167 employees, and six employees in the separately funded Self-Insurance Division, for a total of 183 people.<sup>3</sup>

ILLINOIS WORKERS' COMPENSATION COMMISSION  
ORGANIZATIONAL CHART



For the sake of clarity, we list the individual in a position at the time this report went to print.

---

CHAIRMAN'S OFFICE

Headcount: 3

---

Dennis R. Ruth, Chairman

The Chairman's Office consists of Katherine Devereaux, purchasing officer, Kathryn Kelley, legal counsel, and Rebecca Marble, chairman's secretary.

---

FISCAL OFFICE

Headcount: 9

---

Carol Reckamp, Manager

This unit pays the bills, handles payroll and purchasing, manages the appropriations process, and administers the Commission's special funds.

---

HUMAN RESOURCES

Headcount: 1

---

Alma Maxey, Manager

This office handles personnel transactions and benefit programs.

---

INSURANCE COMPLIANCE

Headcount: 4

---

Jannis Eisbart, Manager

This unit enforces the law that requires employers to have workers' compensation insurance.

---

JUDICIAL DIVISION

Headcount: 65

---

Carolyn Parks, Executive Director/Judicial Manager

*Arbitration*

Bertha Parker, Coordinator

Arbitrators conduct hearings, issue decisions, and approve settlements of cases. At the end of FY07, 15 arbitrators worked in the Chicago office and 18 arbitrators traveled to 31 downstate hearing sites. Three support staff set schedules and provide clerical support.

*Commission*

Dora Shabazz, Coordinator

Three panels of three commissioners conduct hearings, issue decisions, and approve settlements of cases that have been appealed from the arbitration level. On each panel, one member represents business, one represents labor, and one is a public member.

Each commissioner has two staff attorneys who analyze and summarize cases, and draft decisions and orders; each commissioner also has an administrative assistant who manages the caseload and provides clerical support.

---

MANAGEMENT INFORMATION SYSTEMS

Headcount: 9

---

Daniel "DJ" Coluzzi, Manager

MIS maintains the computer systems, and produces notices, call sheets, and other documents.

Amy Masters, Secretary of Commission/Operations Manager

*Central Files*

Employees maintain the case files, coordinate correspondence with the downstate arbitrators, and provide copies of case records to the public.

*Court Reporting*

Court reporters record hearings and produce typewritten transcripts of hearings. One staff person tracks transcripts throughout the hearing process.

*Data Entry*

This unit enters case information into the mainframe computer system.

*Docket*

Employees process all incoming claims, motions, and other case documents.

*Information*

Employees in four locations handle roughly 100,000 telephone calls each year. They explain procedures, distribute informational materials, and prepare summons for the circuit courts.

*Mail Room*

The Mail Room handles nearly one-half million pieces of mail each year.

*Reception*

The receptionist directs visitors and telephone calls.

*Review and Emergency Hearings (19(b) and 19(b-1))*

The unit maintains files for cases on review and schedules oral arguments. It also manages cases filed under Sections 19(b) and 19(b-1) of the Act, which outlines the process by which emergency cases are to be handled.

Susan Piha, Manager

This unit conducts operations research, handles communications, and manages training programs.

Maria Sarli-Dehlin, Manager

This division administers the self-insurance privilege and handles insolvencies of individual bankrupt self-insurers.

## Statistics

Each year in Illinois, roughly 250,000 work-related accidents occur. In most of these cases, the worker does not lose time from work. Each year, approximately 60,000 - 70,000 claims are filed with the Commission; the statistics in this section refer only to those cases that are filed with the Commission.

### ACCIDENT

*Location of accident.* Cases are assigned to the hearing site nearest the site of the accident. If the accident occurred outside of Illinois, the case is assigned to the hearing site closest to the petitioner's home; if the petitioner lives outside of Illinois, the case is set at the site most convenient to the parties.

The following table groups the 1,200 cities and towns in Illinois by the 32 hearing sites to which the claims were assigned, and indicates where accidents occur.

#### NEW CASES FILED BY HEARING SITE

Hearing Site	FY07	FY06	FY05	FY04	FY03
1. Belleville*	1,291	1,277	1,365	1,459	1,681
2. Bloomington	1,384	1,396	1,682	1,940	1,854
3. Carlinville	404	319	309	322	366
4. Carlyle	505	522	619	652	703
5. Chicago	22,634	22,575	23,096	24,712	26,475
6. Clinton	189	211	175	255	240
7. Collinsville*	1,778	1,918	1,904	2,095	2,021
8. Danville	447	504	541	541	653
9. Decatur	799	816	853	851	915
10. De Kalb	431	410	458	483	521
11. Galesburg	532	570	710	664	734
12. Geneva	2,541	2,464	2,558	2,704	2,773
13/14. Herrin/Whittington	2,233	2,276	2,577	2,487	2,466
15. Jacksonville	485	491	535	533	542
16. Joliet	2,654	2,548	2,431	2,543	2,617
17. Kankakee	646	615	686	728	781
18. Lawrenceville	437	375	416	357	475
19. Mattoon	806	910	1,114	1,090	1,162
20. Mt. Vernon	567	561	527	492	506
21. Ottawa	903	925	898	983	931
22. Peoria	2,603	2,671	2,644	2,845	2,838
23. Quincy	469	492	478	525	558
24. Rock Falls	440	492	427	555	634
25. Rock Island	639	747	814	795	799
26. Rockford	2,482	2,320	2,314	2,612	2,649
27. Springfield	1,385	1,424	1,298	1,435	1,424
28. Taylorville	126	143	137	150	139
29. Urbana	767	820	892	934	964
30. Waukegan	2,122	2,066	2,178	2,272	2,462
31. Wheaton	3,127	3,107	3,135	3,219	3,456
32. Woodstock	859	946	944	1,034	964
Total new cases filed	56,685	56,911	58,715	62,267	65,303

\* In FY04, cases in eastern Madison County were moved from the Belleville docket to the Collinsville docket.

ACCIDENT

*Part of body injured.* If a case involved more than one body part, each part was counted separately.

PART OF BODY INJURED  
BY FISCAL YEAR OF ACCIDENT

	FY07	FY06	FY05	FY04	FY03
Head and neck					
Eyes	1%	<1%	<1%	1%	<1%
Head--other parts	3%	2%	3%	3%	3%
Neck	4%	4%	4%	4%	4%
Trunk					
Back	16%	17%	18%	18%	18%
Shoulder	7%	7%	6%	6%	7%
Not specified	3%	2%	2%	2%	2%
Upper extremities					
Arm	10%	10%	10%	10%	11%
Hand	12%	13%	13%	13%	14%
Finger	5%	5%	5%	5%	6%
Not specified	3%	3%	3%	3%	3%
Lower extremities					
Foot	5%	5%	5%	5%	5%
Knee	6%	6%	6%	6%	6%
Leg	7%	7%	7%	7%	7%
Toe	<1%	<1%	<1%	<1%	<1%
Not specified	2%	2%	2%	1%	1%
Body systems	<1%	<1%	<1%	<1%	<1%
Multiple parts	16%	15%	16%	16%	13%
Total	100%	100%	100%	100%	100%

AVERAGE WEEKLY WAGE

Claimants' wages generally lag behind the statewide average weekly wage. The wages of workers who experienced accidents in FY07 averaged 14% lower than the statewide average.

AVERAGE WEEKLY WAGE  
BY YEAR OF ACCIDENT

	FY07	FY06	FY05	FY04	FY03
Claimants' Average Weekly Wage	\$739.89	\$716.48	\$690.49	\$677.14	\$670.85
Statewide Average Weekly Wage as of 6/30	\$861.38	\$822.20	\$788.99	\$764.80	\$753.31



**BENEFIT RATES**

Unless otherwise noted, benefits are paid at 66 2/3% of the injured worker's gross average weekly wage (AWW) during the year preceding the accident or last exposure. Benefits are limited to a percentage of the statewide average weekly wage (SAWW) in effect at the time of the injury or exposure. The Illinois Department of Employment Security publishes the SAWW every six months.

**WEEKLY BENEFIT LIMITS AS OF JUNE 30, 2007**

TEMPORARY TOTAL DISABILITY		MINIMUM	MAXIMUM
	0	\$173.32	\$1,148.51
Number of	1	\$199.32	
children	2	\$225.32	
and/or spouse:	3	\$251.32	
	4+	\$260.00	

For injuries occurring on or after February 1, 2006, the minimum rates for TTD are 66 2/3% of the federal or state minimum wage, whichever is higher, multiplied by 40 hours. The percentage increases by 10% for each spouse and child, not to exceed 100% of the total wage calculation. The benefit shall not exceed the worker's average weekly wage.

**TEMPORARY PARTIAL DISABILITY**

For injuries occurring on or after February 1, 2006, an employee who works light-duty and earns less than he or she would be earning at full capacity is entitled to TPD. TPD shall be paid at two-thirds of the difference between 1) the average amount the employee would be able to earn in the full performance of his or her duties in the occupation in which he or she was engaged at the time of the accident, and 2) the net amount that he or she is earning in the modified job.

PERMANENT PARTIAL DISABILITY		MINIMUM	MAXIMUM
	0	\$173.32	\$619.97
Number of	1	\$199.32	
children	2	\$225.32	
and/or spouse:	3	\$251.32	
	4+	\$260.00	

For injuries occurring on or after February 1, 2006, the minimum rates for PPD are 66 2/3% of the federal or state minimum wage, whichever is higher, multiplied by 40 hours. The percentage increases by 10% for each spouse and child, not to exceed 100% of the total wage calculation. The benefit shall not exceed the worker's average weekly wage.

Amputations and enucleations are compensated at a higher rate: the minimum is 50% of the statewide average weekly wage, and the maximum is the maximum TTD rate.

The maximum benefit under Section 8(d)(1) is 100% of the statewide average weekly wage.

PERMANENT TOTAL DISABILITY		MINIMUM	MAXIMUM
		\$430.69	\$1148.51

The minimum PTD benefit cannot be less than 50% of the SAWW. The maximum benefit can be no more than 133 1/3% of the SAWW.

FATALITY		MINIMUM	MAXIMUM
		\$430.69	\$1,148.51

The minimum death benefit cannot be less than 50% of the SAWW. The maximum benefit can be no more than 133 1/3% of the SAWW.

CASES CLOSED

As in other court systems, most cases at the Commission are settled. Please note that these figures report only the final action on a case. If a case had more than one action (e.g., a case was decided at arbitration, then decided by the Commission, then settled), only the final action is reported here. An arbitration case is counted as closed if it was dismissed, settled, or if a decision was issued and no appeal was filed.

TOTAL CASES CLOSED  
ARBITRATION AND REVIEW LEVELS

	FY07	%	FY06	%	FY05	%	FY04	%	FY03	%
Dismissals	5,747	9%	7,831	12%	7,173	11%	6,785	10%	6,707	10%
Settlements	52,521	87%	54,468	85%	56,327	86%	57,482	87%	61,815	88%
Decisions	<u>2,413</u>	4%	<u>2,160</u>	3%	<u>1,977</u>	3%	<u>2,108</u>	3%	<u>1,914</u>	3%
Total	60,681		64,459		65,477		66,375		70,436	

CASES CLOSED  
AT ARBITRATION

FINAL ACTION	FY07	%	FY06	%	FY05	%	FY04	%	FY03	%
Dismissals:										
Voluntary	589		673		712		590		582	
DWP*	<u>5,053</u>		<u>7,043</u>		<u>6,352</u>		<u>6,069</u>		<u>6,042</u>	
Total dismissals	5,642	10%	7,716	12%	7,064	11%	6,659	10%	6,624	10%
Settlements:										
Original settlements	9,168		9,551		9,876		10,480		10,723	
Before arb. decision	41,958		43,605		45,223		45,922		50,206	
After arb. decision	<u>777</u>		<u>742</u>		<u>713</u>		<u>668</u>		<u>549</u>	
Total settlements	51,903	88%	53,898	85%	55,812	87%	57,070	88%	61,478	89%
Decisions	1,363	2%	1,466	2%	1,303	2%	1,379	2%	1,180	2%
Total closed	58,908		63,080		64,179		65,108		69,282	

\* DWP = Dismissed for Want of Prosecution

CASES CLOSED  
AT REVIEW

FINAL ACTION	FY07	%	FY06	%	FY05	%	FY04	%	FY03	%
Dismissals at review	105	6%	115	8%	109	8%	126	10%	83	7%
Settlements:										
Before arb. decision	126		129		75		45		42	
After arb. decision	354		323		321		252		196	
After review decision	<u>138</u>		<u>118</u>		<u>119</u>		<u>115</u>		<u>99</u>	
Total settlements	618	35%	570	41%	515	40%	412	33%	337	29%
Review decisions	1,050	59%	694	50%	674	52%	729	58%	734	64%
Total cases closed	1,773		1,379		1,298		1,267		1,154	

Because of rounding, percentages do not always add up to 100%.

## CASES OPENED

### CASES OPENED

	FY07	FY06	FY05	FY04	FY03
New claims filed	47,461	47,135	48,711	51,752	54,504
Original settlements filed	<u>9,231</u>	<u>9,796</u>	<u>10,004</u>	<u>10,515</u>	<u>10,799</u>
Total new cases filed	56,692	56,931	58,715	62,267	65,303
Returned for further action*	0	39	222	42	384
Reinstated	1,609	2,195	1,992	1,914	2,244
Remanded to arbitrator	54	53	52	54	36
Remanded to commissioner	<u>81</u>	<u>40</u>	<u>65</u>	<u>73</u>	<u>55</u>
Total cases returned to caseload	1,744	2,327	2,331	2,083	2,719
Total additions to the caseload	58,436	59,258	61,046	64,350	68,022

\* This category was created to make the caseload numbers balance, accounting for those cases that were counted closed more than once (e.g., a case was decided in one fiscal year, and counted as closed, but then a settlement was approved in the next fiscal year).

A new claim is opened when a worker files an application with the Commission; in 83% of those cases, the worker hires an attorney. When a settlement contract is filed without a prior application, it is referred to as an original settlement; in 95% of those cases, the worker *does not* have an attorney.

## CASES PENDING

*Arbitration.* At the end of FY07, there were roughly 95,000 cases pending at arbitration. In most cases, the parties to these pending cases are *not waiting* for the Commission to act. Roughly 90% of these cases have the status, “continued at arbitration,” which means the case is being automatically continued, waiting for the parties to act. The majority of cases at arbitration are settled, and parties are free to settle at any time.

In May 2005, after the Commission hired more arbitrators, the chairman directed arbitrators to give special attention to the oldest cases, and make efforts to resolve these cases. By the end of FY07, the number of red-line cases—those three years old or older—had decreased by 12%.

*Review.* At the end of FY07, there were 2,400 cases pending before commissioners.

## DECISIONS ISSUED

Most of the cases filed with the Commission are settled. When cases are decided, fewer and fewer cases proceed on to the next level, as shown below. Cases involving state employees cannot proceed past the Commission.

Thanks to the addition of a third panel of commissioners, the number of Commission decisions increased 50%.

### DECISIONS AND APPEALS

	Arbitration Decisions Issued	% Appealed	Commission Decisions Issued	% Appealed	Circuit Ct. Decisions Issued	Appellate Ct. Opinions/Orders Issued	Supreme Ct. Opinions Issued
2003	2,912	50%	1,055	29%	250-300	107	1-5
2004	3,759	51%	1,025	31%	250-300	123	1-5
2005	3,578	52%	1,054	28%	250-300	106	1-5
2006	3,899	50%	1,090	28%	250-300	108	1-5
2007	3,644	49%	1,613	25%	250-300	108	1-5

Note: Commission figures are for the fiscal year; court figures are for the calendar year.

*Appeal rates.* The petitioner appeals an arbitration decision hoping for an increase in benefits, but of those cases appealed by the petitioner, the commissioners did not increase benefits in 73% of these cases. Similarly, the respondent appeals with the hope of a decreased benefit, but of the cases appealed by the respondent, the commissioners did not decrease benefits 77% of the time.

OUTCOME OF APPEALS  
REVIEW DECISIONS ISSUED IN FY07

Arbitration decision was appealed by:	Petitioner (Employee)	Respondent (Employer)	Both	Total
Affirmed	71%	70%	49%	68%
Reversed	10%	5%	4%	7%
Modified, no change in benefits	0%	1%	5%	1%
Benefits increased	17%	6%	26%	14%
Benefits decreased	2%	18%	15%	10%

*Turnaround times.* The times shown below should be considered together. A regular case that is decided at both the arbitration and Commission levels, for example, would take about 54 months, or 4 ½ years.

DECISIONS ISSUED  
DURING FY07

	Regular Cases	19(b) Cases	19(b-1) Cases
Arbitration decisions*	2,723	912	9
# Months to issue	35	8	3
Commission decisions**	1,072	448	7
# Months to issue	19	14	3

\* For regular arbitration cases, the turnaround time is calculated from the date a claim is filed until the date the decision is filed; for 19(b) and 19(b-1) cases, the time is calculated from the date a petition is filed until the decision is filed.

\*\* For Commission decisions, the turnaround time is calculated from the date a *Petition for Review* is filed until the decision is filed.

Note: Some decisions—those involving only attorney fees or penalties, for example—are not included in the three categories above.

*Trends.* Under Section 19(b-1) of the Act, an injured worker who is not receiving temporary total disability benefits or medical benefits may petition for an emergency hearing. Alternately, the worker may choose to file under 19(b) of the Act if he or she is not receiving temporary total disability benefits. Over the years, there has been a clear shift from 19(b-1) petitions, which involve statutorily set deadlines, to 19(b) petitions, where the deadlines are not defined but expedited hearings are set. The new law requires the Commission to issue a 19(b) review decision within 180 days of the date the *Petition for Review* was filed.

EXPEDITED DECISIONS ISSUED BY ARBITRATORS

	19(b)/8(a)	19(b-1)	Total
FY90	170	342	512
FY00	347	20	367
FY05	825	10	835
FY06	895	17	912
FY07	912	9	921

## GENDER

Women constitute 46% of the workers in Illinois,<sup>4</sup> but they file a smaller share of workers' compensation claims. The most dangerous industries—construction, agriculture, transportation, etc.—are still male-dominated. Over the years, the proportion of female claimants has increased, however, from 22% of claimants in FY85 to 33% in FY07.

## INJURY RATES

The statistics in this section come from the National Council on Compensation Insurance and the U.S. Bureau of Labor Statistics, which use different methods to derive their data. There are limitations to both methods—e.g., NCCI excludes self-insurers, the BLS nonfatal survey is prone to sampling error—but they produce the best data now available.

In rough terms, both data sets indicate that fewer than 5% of Illinois workers experience an injury each year, and that the injury rates have declined dramatically over the years.

The overall injury rate in Illinois has tended to be lower than other states (see “Interstate Comparisons”), and it is declining dramatically: Illinois' 2004 total injury rate is 55% lower than in 1991.

Each section contains the most recent data available.

PERCENTAGE OF WORKERS  
EXPERIENCING WORK-RELATED INJURIES IN ILLINOIS EACH YEAR  
BY INJURY TYPE<sup>5</sup>

### NCCI DATA

Policy Year	Medical Only	Temporary Total	Permanent Partial	Permanent Total	Fatal	Total
1991	6.3%	1.49%	1.04%	.004%	.004%	8.9%
1995	4.9%	1.23%	0.68%	.004%	.004%	6.8%
2000	3.9%	0.84%	0.69%	.007%	.005%	5.4%
2001	3.4%	0.75%	0.65%	.008%	.004%	4.9%
2002	3.2%	0.70%	0.64%	.006%	.002%	4.5%
2003	2.9%	0.66%	0.61%	.005%	.003%	4.2%
2004	2.8%	0.65%	0.59%	.005%	.004%	4.0%

RATE OF NON-FATAL WORK-RELATED INJURIES AND ILLNESSES  
IN ILLINOIS, 2005<sup>6</sup>

### BLS DATA

Workers' Nonfatal Injury and Illness Rate by Industry		Distribution of Injuries In Private Sector by Event	
Agriculture	7.6%	Overexertion	27%
Transportation	7.2%	Contact w. objects/equip.	27%
Mining	7.1%	Fall	20%
Government	6.9%	Transportation accident	4%
Manufacturing	6.3%	Repetitive motion	4%
Construction	6.0%	Exposure to harmful substances	3%
Services	3.5%	Slip or trip (no fall)	3%
Finance	1.2%	Assault or violent act	1%
		Fire or explosion	<1%
Average for all workers	4.4%	Data not available	11%

DISTRIBUTION OF THE 207 FATAL WORK-RELATED INJURIES  
IN ILLINOIS, 2006<sup>7</sup>

BLS DATA

Workers' Fatal Injury Rate by Industry		Distribution of Fatalities by Event	
Transportation	18%	Transportation accident	42%
Construction	16%	Assault or violent act	17%
Manufacturing	10%	Fall	16%
Agriculture	9%	Exposure to harmful substances	13%
Trade, wholesale and retail	7%	Contact with objects/equip.	12%
Government	4%		
Other	36%		

MEDICAL CARE

By law, the employer is required to pay for medical care that is reasonably required to cure or relieve the employee from the effects of a work-related injury or disease. The employer shall pay for all necessary first aid and emergency services, two treating physicians, surgeons, or hospitals of the employee's choice, and any additional medical care providers to whom the employee is referred by the two physicians, surgeons, or hospitals. The employer shall also pay for necessary physical, mental, and vocational rehabilitation. The employee must cooperate in reasonable programs to assist in his or her recovery and return to work.

By law, Illinois' first medical fee schedule for workers' compensation took effect for services on or after February 1, 2006. Illinois was the first state in the country to publish its fee schedule and accompanying documents online at no charge.

Fees for each procedure were set at 90% of the 80<sup>th</sup> percentile of actual bills in each geographic area. Each year, fees rise by the percentage change in the Consumer Price Index. Since medical costs are rising more rapidly than general inflation, this measure is expected to produce significant savings as the years go on.

The 2005 legislation also created a Medical Fee Advisory Board, composed of employee, employer, and medical provider representatives, which has been reviewing and commenting on the process.

PENALTIES

Under Section 16 of the Act, the Commission may order the respondent to pay the petitioner's attorneys' fees if the respondent or its agent has unreasonably delayed benefits to an employee, intentionally underpaid an employee, engaged in frivolous defenses, or has otherwise treated an employee unfairly.

Under Section 19(k), the Commission may award the petitioner additional compensation equal to 50% of the amount of compensation payable at the time of the award if there was an unreasonable or vexatious delay of payment, or an intentional underpayment of compensation. Based on case law, medical expenses are considered compensation under Section 19(k). When awarding 19(k) penalties, the Commission shall consider whether an arbitrator has determined that the claim is not compensable or whether the employer has made payments under a group health plan (§8(j)).

Under Section 19(l), the Commission may award the petitioner additional compensation of \$30 per day for every day that a cash or medical benefit has been withheld without good and just cause, up to \$10,000.

The law also provides that, if the employee has made written demand for payment of benefits under Sections 8(a) or 8(b), the employer shall have 14 days after receipt of the demand to provide a written reason for the delay. If the demand is for medical benefits, the time for the employer to respond does not begin until the expiration of the 60-day period allotted the employer to pay medical bills under Section 8.2.

To put the following figures in perspective, the 194 cases in which penalties were awarded in FY07 represent less than ½ of 1% of total cases closed.

PERCENTAGE OF DECISIONS AWARDING PENALTIES BY YEAR AWARDED

	ARBITRATION DECISIONS		COMMISSION DECISIONS	
	Expedited	Regular	Expedited	Regular
FY03	9%	2%	5%	2%
FY04	11%	3%	6%	2%
FY05	14%	3%	10%	4%
FY06	9%	3%	6%	4%
FY07	10%	2%	3%	2%

POST-AWARD PETITIONS

Cases that were closed by decisions or some settlements may return to the Commission for additional hearings. Under Section 8(a) of the Act, an injured worker may petition the Commission to order payment for additional medical treatment. Under Section 19(h), either party may petition if the injured worker's physical condition changes significantly within 30-60 months of the decision or settlement.

CASES WITH POST-AWARD PETITIONS FILED BY YEAR PETITION FILED

Section	FY07	FY06	FY05	FY04	FY03
8(a)	210	146	169	201	131
19(h)	15	11	10	16	9
8(a) and 19(h)	<u>60</u>	<u>52</u>	<u>55</u>	<u>47</u>	<u>52</u>
Total	285	209	234	264	192

DISPOSITION OF POST-AWARD PETITIONS THROUGH DECISIONS AND ORDERS

By Year Decision/Order Issued	FY07	FY06	FY05	FY04	FY03
8(a)					
Granted	11%	10%	14%	25%	22%
Denied	5%	2%	1%	4%	1%
Dismissed	24%	18%	27%	46%	40%
Withdrawn	60%	70%	58%	25%	38%
19(h)					
Granted	24%	24%	19%	26%	36%
Denied	29%	0%	8%	21%	20%
Dismissed	29%	35%	54%	35%	28%
Withdrawn	19%	41%	19%	18%	16%

If a decision covered both 8(a) and 19(h) petitions, each outcome is counted separately. Because of rounding, percentages may not total 100%.

REHABILITATION

Section 8(a) of the Act requires an employer to pay for treatment, instruction, and training necessary for the physical, mental, and vocational rehabilitation of an injured worker, including maintenance and incidental expenses. Section 6(d) requires an employer to notify an injured worker of the right to rehabilitation services and the location of public rehabilitation centers. Finally, Section 7110.70 of the Commission's rules requires an employer to prepare an assessment of an employee's rehabilitation needs, both medical and vocational, when it becomes apparent the work injuries will prevent his or her return to the pre-accident job, or when the employee is off work for more than 120 days.

As with other employer obligations, where there is a dispute between the parties, the injured worker has the burden of proving entitlement to vocational rehabilitation benefits. In resolving these disputes, the Commission looks to the guidelines established by the Illinois Supreme Court in National Tea Company v. Industrial Commission, 97 Ill.2d 424 (1983).

## Interstate Comparisons

The perception of Illinois workers' compensation costs is often different than the reality. Illinois is a high-wage state with a low injury rate. On most cost measures, Illinois falls in the middle of the pack. Among the 50 states and the District of Columbia, Illinois compares as follows:

Injury rate (percentage of workers injured per year) <sup>8</sup>

Illinois 4.2%

National median 5.5%

*Illinois' injury rate is 24% lower than the national median.*

Benefit cost rates (w.c. benefits paid/payroll) <sup>9</sup>

Illinois 0.98%

National median 1.01%

*Illinois' benefit cost rate is 3% lower than the national median.*

Growth of benefit payments (1996-2005) <sup>10</sup>

Illinois 36.4%

National median 33.3%

*Illinois' benefit growth rate is 2% higher than the national median.*

Medical costs per claim <sup>11</sup>

Illinois \$5,779

National median \$5,681

*Illinois' medical costs are 2% higher than the national median.*

Insurance premium rates (rate per \$100 of payroll) <sup>12</sup>

Illinois \$2.69

National median \$2.48

*Illinois' w.c. insurance rates are 8% higher than the national median.*

Wages (annual) <sup>13</sup>

Illinois \$43,732

National median \$36,348

*Illinois' wages are 20% higher than the national median.*

Indemnity costs per claim <sup>14</sup>

Illinois \$22,279

National median \$17,465

*Illinois' indemnity costs are 28% higher than the national median.*

Since indemnity payments are based on wages and Illinois ranks 9<sup>th</sup>, it would be expected that Illinois' indemnity costs per claim would be higher than states with lower wages.



## OTHER INTERSTATE COMPARISONS: BENEFIT PAYMENTS

### TOTAL WORKERS' COMPENSATION BENEFIT PAYMENTS<sup>15</sup>

In \$billions	2005	2004	2003	2002	2001	2000	1999	1998	1997	1996
Illinois	\$2.4	\$2.2	\$2.1	\$2.1	\$2.1	\$1.9	\$1.7	\$1.7	\$1.7	\$1.8
% Change	7%	5%	(<1%)	2%	9%	12%	5%	(5%)	(2%)	14%
U.S.	\$52.0	\$52.8	\$51.9	\$49.3	\$47.8	\$44.7	\$43.5	\$41.1	\$39.2	\$38.9
% Change	(1%)	2%	5%	3%	7%	3%	6%	5%	1%	(<1%)

### CHANGE IN TOTAL BENEFIT PAYMENTS, 1978 - 2005

	2004-2005	1996-2005	1987-1996	1978-1987
Illinois	7%	36%	65%	118%
Neighboring states average	1%	39%	80%	125%
Large industrial states average	(7%)	30%	56%	226%
National average	(1%)	34%	58%	203%

## COMPLIANCE WITH 1972 RECOMMENDATIONS

In 1972, the National Commission on State Workmen's Compensation Laws, appointed by President Nixon, unanimously listed 19 items as essential to an adequate system. Over 30 years later, no state in the country meets all the requirements; Illinois meets more than most states.<sup>16</sup>

### NUMBER OF 19 ESSENTIAL RECOMMENDATIONS MET

NEIGHBORING STATES		National average	12.85	LARGE INDUSTRIAL STATES	
Iowa	15.50	Illinois	15.00	Ohio	15.50
Wisconsin	15.00			Pennsylvania	13.75
Kentucky	14.25			Texas	12.50
Missouri	13.75			California	12.00
Indiana	11.50			New York	10.75
Michigan	9.75			Florida	9.75
<i>Median</i>	14.00			<i>Median</i>	12.25

## COVERAGE OF EMPLOYEES

Even though Illinois does not meet four of the National Commission's recommendations concerning the coverage of employees, more workers are covered in Illinois than in most other states.<sup>17</sup>

### PERCENTAGE OF EMPLOYEES COVERED

NEIGHBORING STATES		National average	88%	LARGE INDUSTRIAL STATES	
Indiana	90%	Illinois	91%	Ohio	91%
Michigan	89%			New York	90%
Kentucky	87%			Pennsylvania	90%
Iowa	86%			California	89%
Wisconsin	86%			Florida	88%
Missouri	85%			Texas	74%
<i>Median</i>	87%			<i>Median</i>	90%

---

<sup>1</sup> “Workers’ Compensation, Top Writers by State—2007 Direct Written Premium,” A.M. Best, 2008.

<sup>2</sup> National Council on Compensation Insurance filings with the Illinois Division of Insurance. For more information, call the Illinois Division of Insurance (217/524-8361). The Consumer Price Index data came from the CPI Inflation Calculator on the Bureau of Labor Statistics’ web site ([www.bls.gov](http://www.bls.gov)), which showed that \$100 in 1990 represented \$157.12 in 2007:  $(104.32/157.12)-1 = 34\%$  decrease.

<sup>3</sup> Temporary employees, student workers, and people on leave were not included. We report the headcount as of 6/30/07 but we list the person in a position as of the time this report went to print.

<sup>4</sup> “Employment status of the civilian noninstitutional population by sex, race...2006 annual averages,” Illinois table, U.S. Bureau of Labor Statistics (<http://www.bls.gov/lau>), found under: Tables and Maps Created by BLS/Annual Averages/Geographic Profile of Employment and Unemployment, Section II: Estimates for States (ptable14full2006.pdf).

<sup>5</sup> *Annual Statistical Bulletin*, National Council on Compensation Insurance, 1994 – 2007 editions, Exhibit XII, First Report. The statistic for the overall reduction in injury rate was calculated as follows: for Policy Year 1991, the NCCI reported 8,874 total injuries per 100,000 workers; for Policy Year 2004, the NCCI reported 4,034 total injuries per 100,000 workers, a 55% reduction. This information refers only to the experience of employers with insurance, not self-insurers. The figures for fatalities and PTDs come from a small number of cases and should be viewed with caution. Information is not available for the five states with exclusive state insurance funds (ND, OH, WA, WV, WY).

<sup>6</sup> *Nonfatal Workplace Injuries and Illnesses: Illinois, 2005*, Illinois Department of Public Health, Tables 3, 6, April 2008. This is the most recent data available. Because of changes in methodology, data since 2002 are not comparable to prior years. Since 1998, IDPH has participated in the U.S. Bureau of Labor Statistics’ federal/state Survey of Occupational Injuries and Illnesses. Each year, they survey a sample of employers in the private and nonfederal public sectors. Federal employees and farms with fewer than 11 employees are excluded from the survey. Reports are available at <http://www.idph.state.il.us/about/epi/cfoirpt.htm>. For more information, contact the IDPH Division of Epidemiologic Studies at 217/785-1873.

<sup>7</sup> *Census of Fatal Occupational Injuries and Illnesses in Illinois, 2006*, Illinois Department of Public Health, Tables 3, 5, February 2008. The IWCC provides information on fatal workers’ compensation claims to IDPH, which has participated in the U.S. Bureau of Labor Statistics Census of Fatal Occupational Injuries since 1992. The CFOI methodology does not correspond exactly to workers’ compensation criteria, but the program provides a standard measure of fatal occupational injuries for the country.

<sup>8</sup> *Annual Statistical Bulletin*, Exhibit XII, Policy Year 2003, First Report.

<sup>9</sup> Fiscal Data for State Workers’ Compensation Systems, 1996-2005,” *Research Bulletin*, National Foundation for Unemployment Compensation and Workers’ Compensation, September 2007, Table 2. The 2005 figures are the most recent available. Figures for previous years were revised in the 2007 report. These figures represent the change in w.c. benefit payments from 1996-2005.

<sup>10</sup> “Fiscal Data,” Table 16.

<sup>11</sup> *Annual Statistical Bulletin*, Exhibit XI, Policy Year 2003, First Report.

<sup>12</sup> “2006 Oregon Workers’ Compensation Premium Rate Ranking Summary,” Oregon Department of Consumer and Business Services, October 2006, Table 2. Available at <http://www4.cbs.state.or.us>. Indices are based on rates as of from 2004 – 2006; Illinois’ rates are as of 1/1/06. This report is produced every two years. This report compares employers’ w.c. insurance costs in 50 different class codes. Overall, Illinois ranks in the middle, but there is great variation in the manual premium among different classes. Employers in Illinois buy w.c. insurance in an open market, the way drivers buy car insurance, and costs are heavily dependent on accident history and market environment. The employer’s ability to shop for the best deal comes into play, too.

<sup>13</sup> “Total coverage (UI and UCFE) by State, 2005 annual averages,” US Bureau of Labor Statistics, BLS website (ew05table5.pdf) (<http://www.bls.gov/cew/cewbultn05.htm>).

<sup>14</sup> *Annual Statistical Bulletin*, Exhibit XI, Policy Year 2003, First Report.

<sup>15</sup> “Fiscal Data:” 1996 and 2006 data came from September 2007 report, Table 15; 1987 data came from August 1999 report, Table 1; 1978 data came from May 1990 report, Table 1.

<sup>16</sup> “State Workers’ Compensation Laws in Effect January 1, 2004 Compared with the 19 Essential Recommendations of the National Commission on State Workmen’s Compensation Laws,” [www.workerscompresources.com](http://www.workerscompresources.com), John F. Burton, Jr. (former chairman of the National Commission), Table 1. In 1972, the National Commission on Workmen’s Compensation issued 84 recommendations concerning the coverage of employees and diseases, income protection, medical care, worker safety, and program administration. They identified 19 of the 84 recommendations as essential to ensuring a minimum level of protection. As of January 1, 2004, compliance levels range from 7.25 in Mississippi to 17.00 in Nebraska. Illinois does not comply with the National Commission’s recommendations 2.4 (Illinois exempts farm workers below a certain number of hours), 2.5 (Illinois exempts household workers and casual workers below a certain number of days), 2.6 (Illinois exempts some governmental employees (Chicago police and fire fighters)) and 2.7 (Illinois exempts certain classes of employees, such as those already noted).

<sup>17</sup> “Workers’ Compensation Coverage by State,” *Workers’ Compensation Data Fact Sheet, No. 1*, National Academy of Social Insurance, October 2002, Table 1, column 5. This is the most recent year for which figures are available.

**ILLINOIS WORKERS' COMPENSATION COMMISSION  
100 W. RANDOLPH STREET #8-200  
CHICAGO, IL 60601**